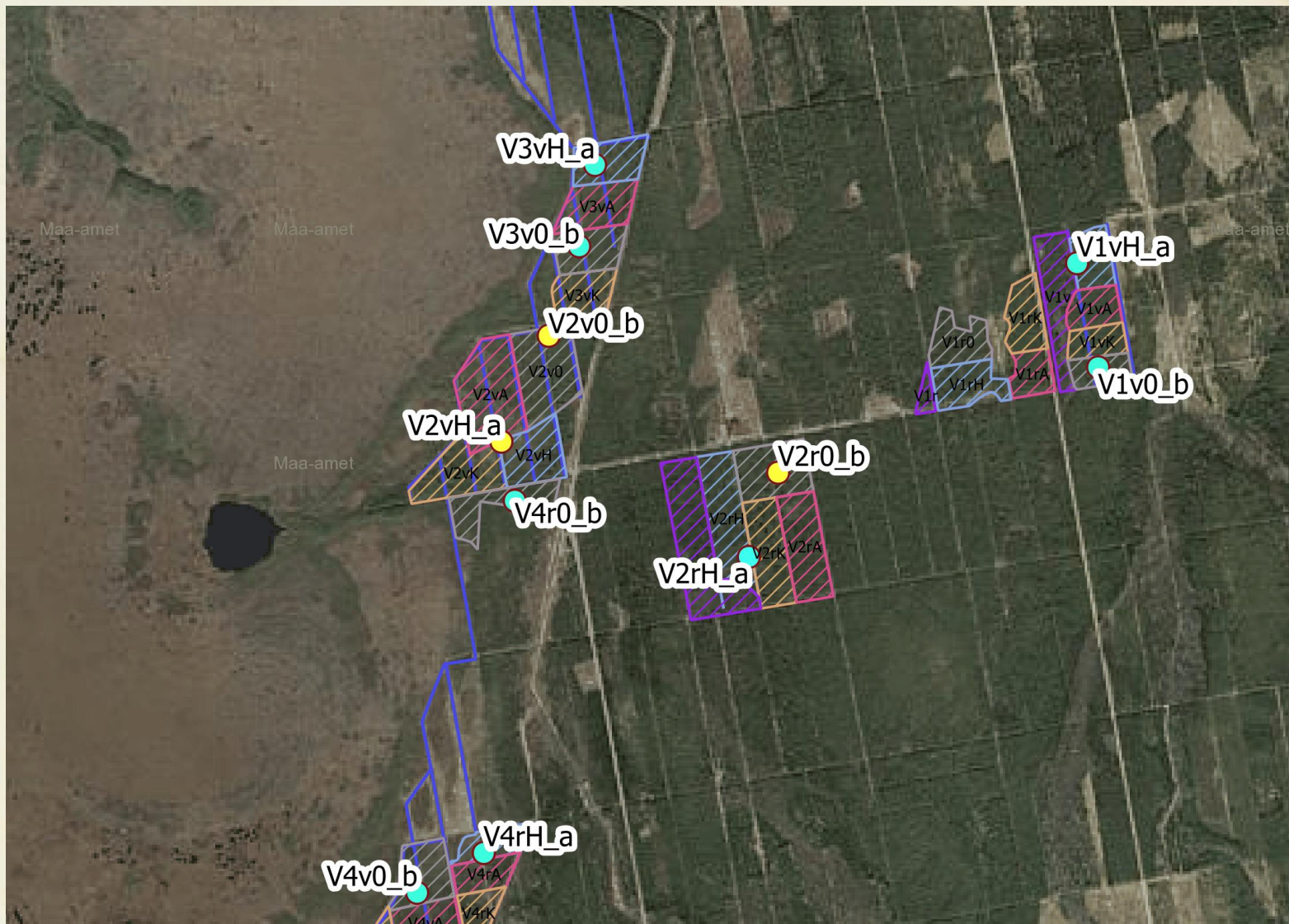


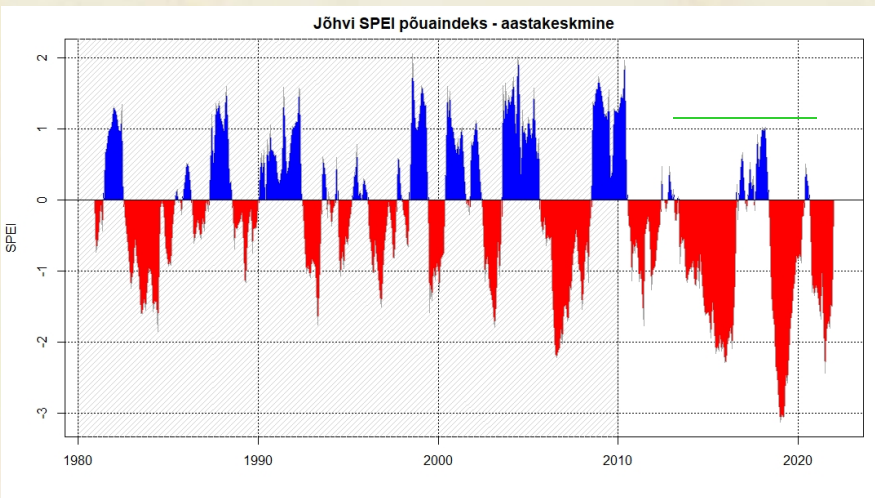
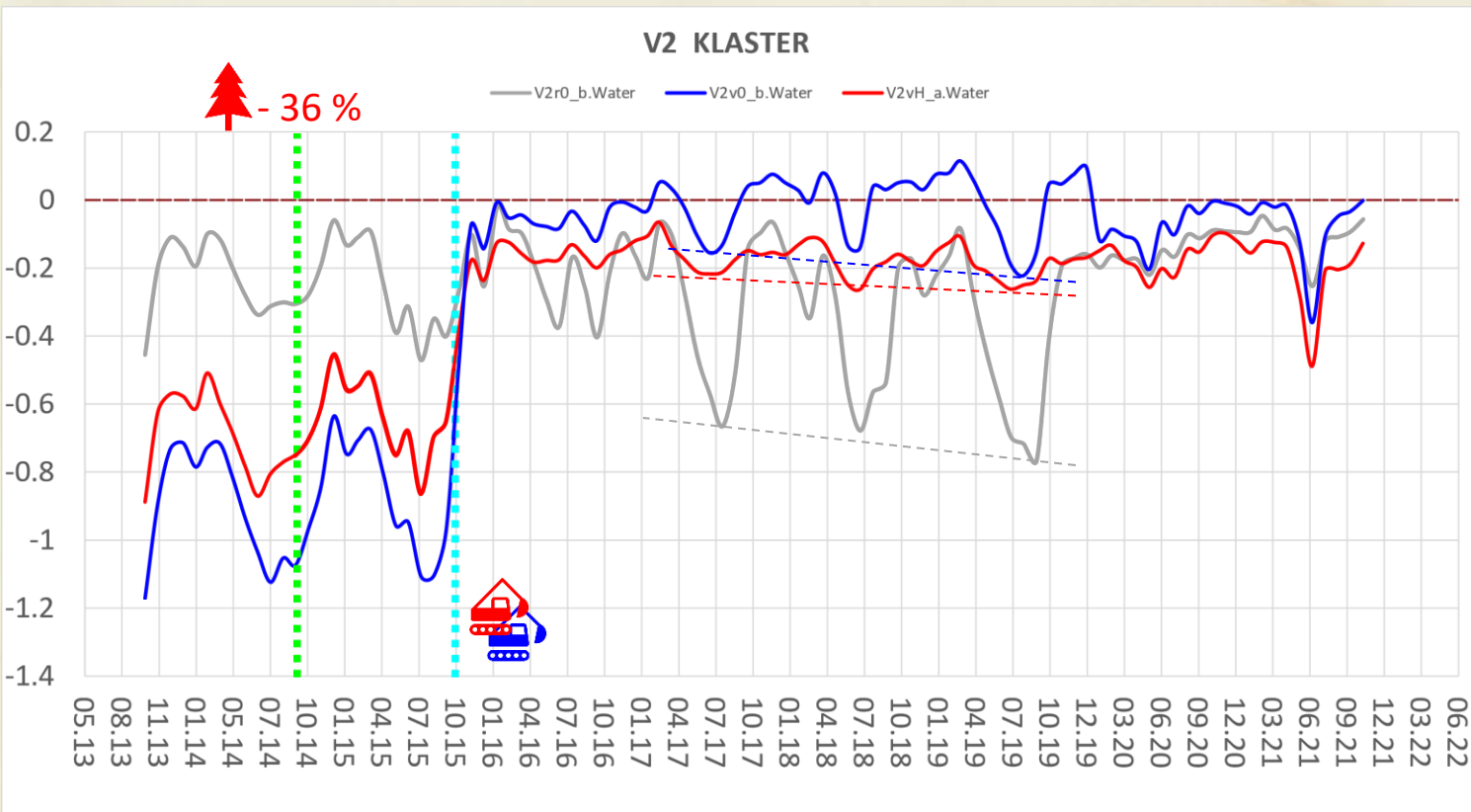
Soode taastamistöõde mõju veele ja metsale

Marko Kohv

Narva,
04.11.2022 .a.

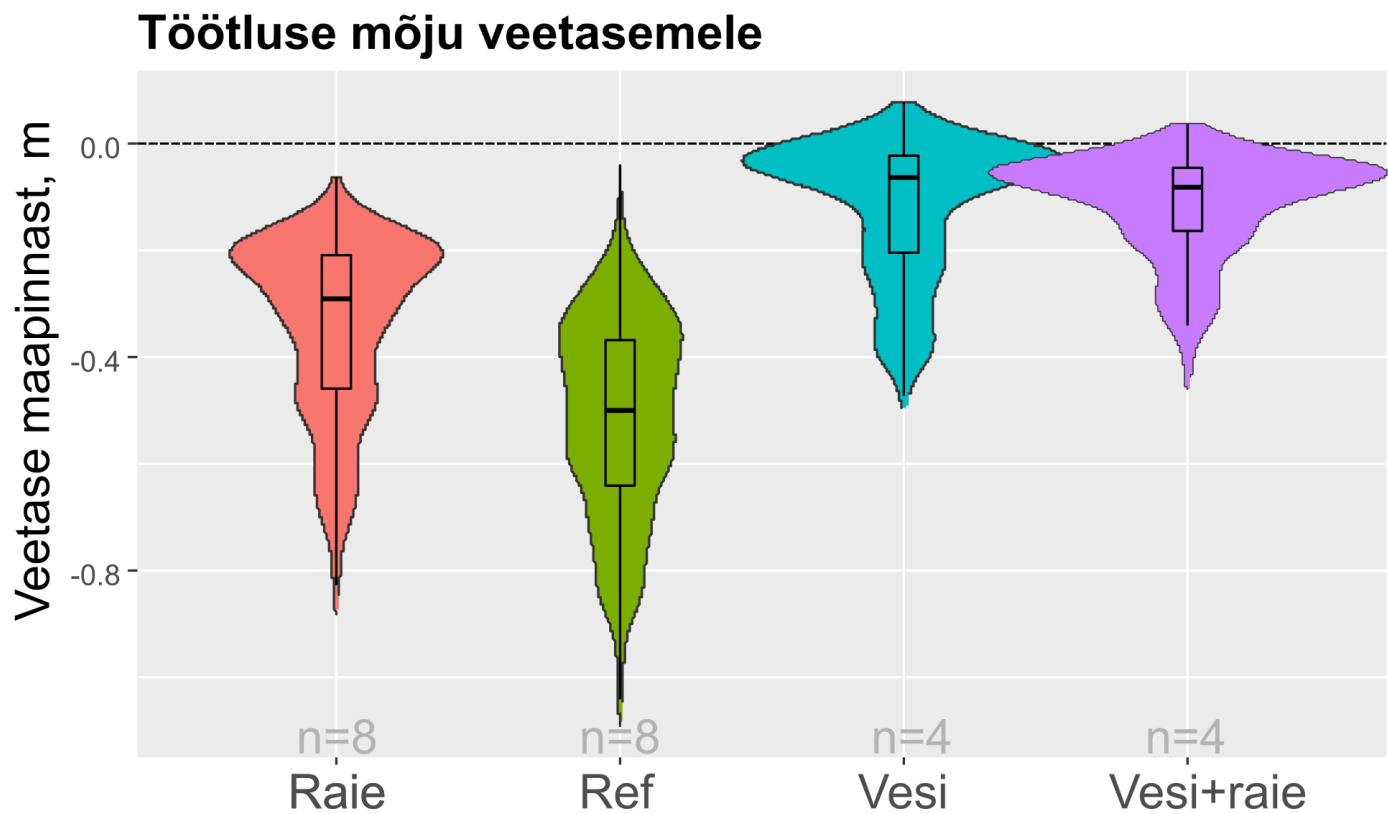
Veetaseme muutus Soomaal





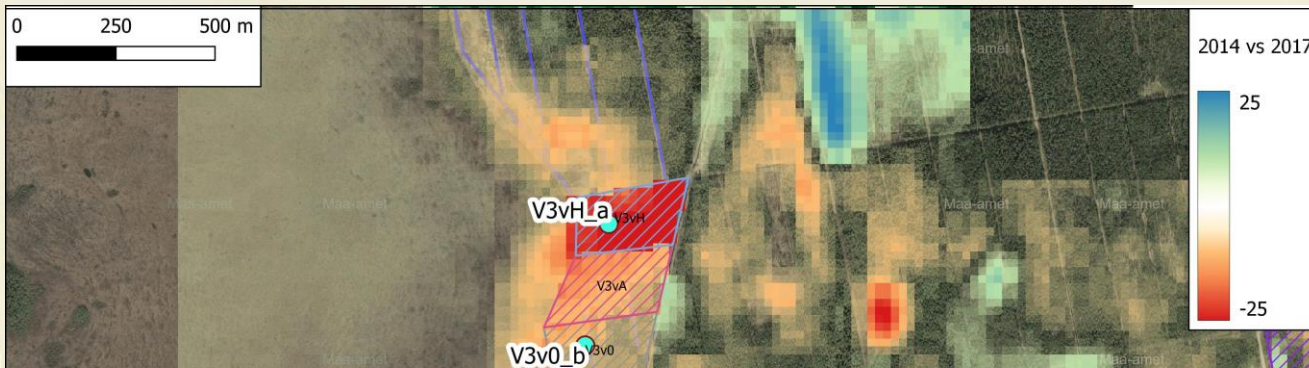
Veetase tõuseb ja rahuneb
Osalisel raiel on mõju
Ühendus maastikuga!

Veetaseme muutus

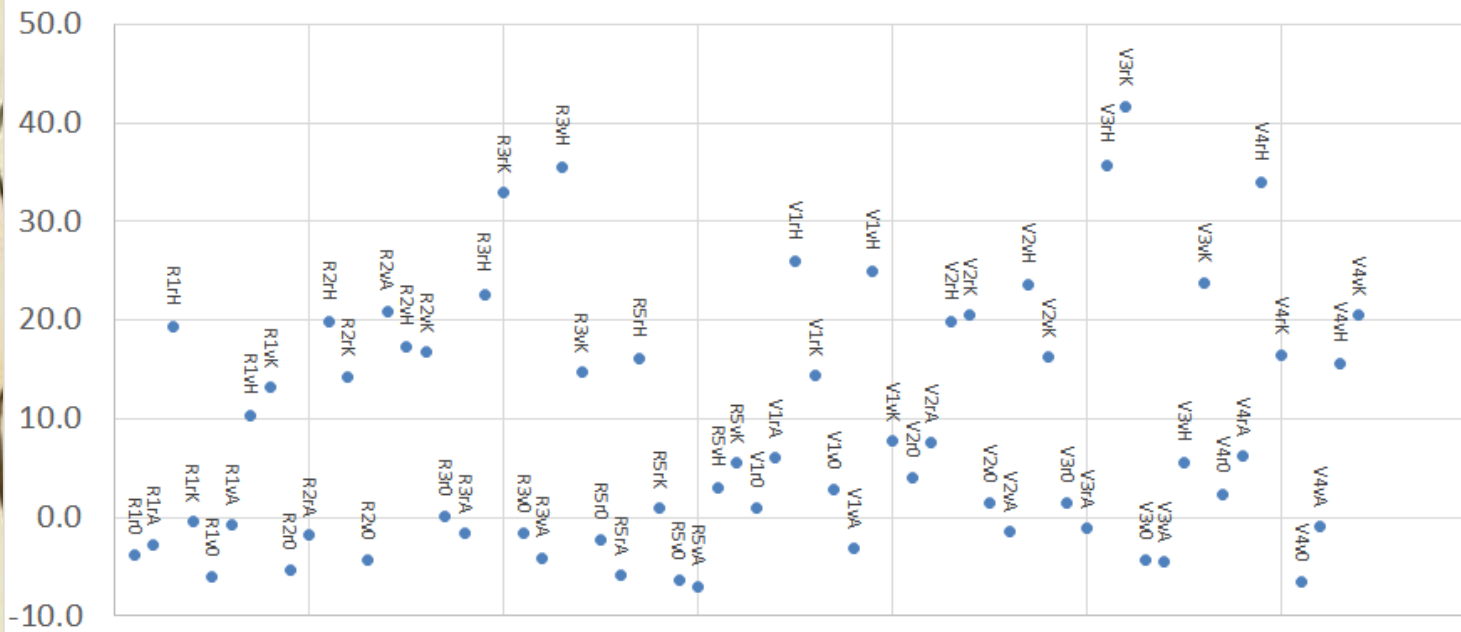


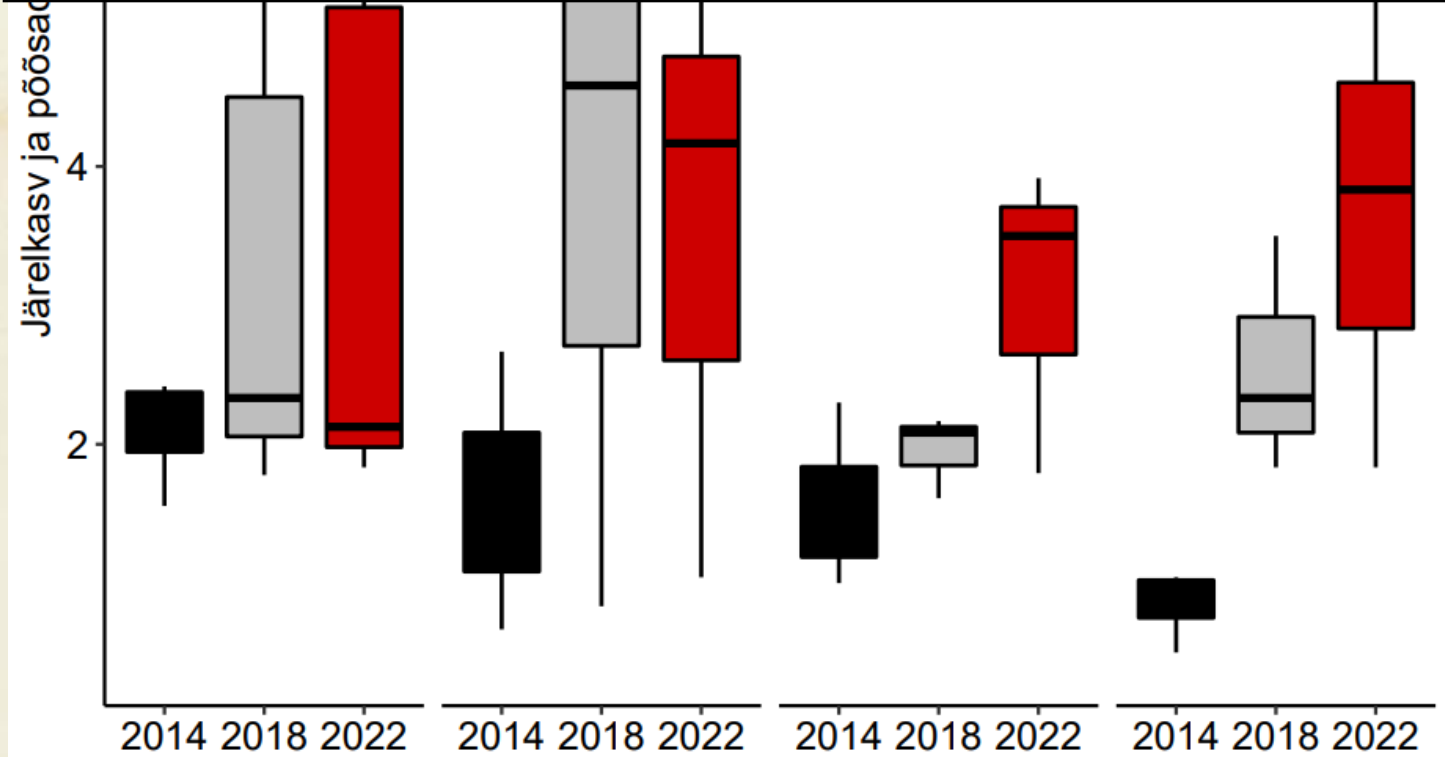
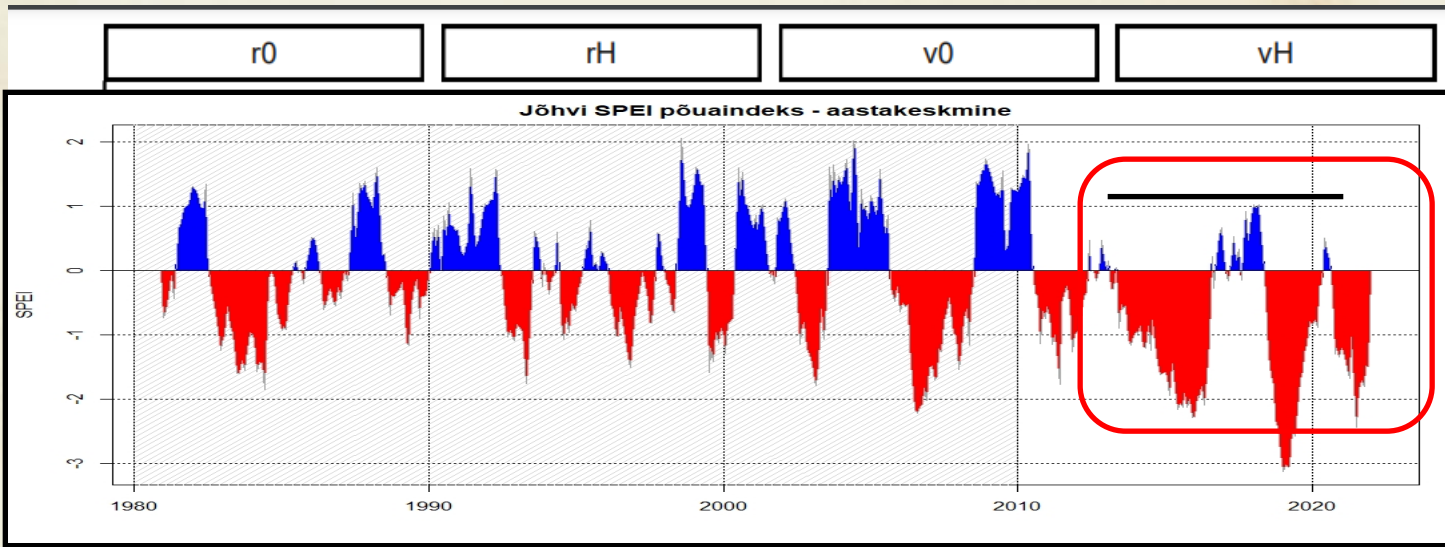
V4v0_b
V4rA
V4rK
V4rH_a

Metsa muutus

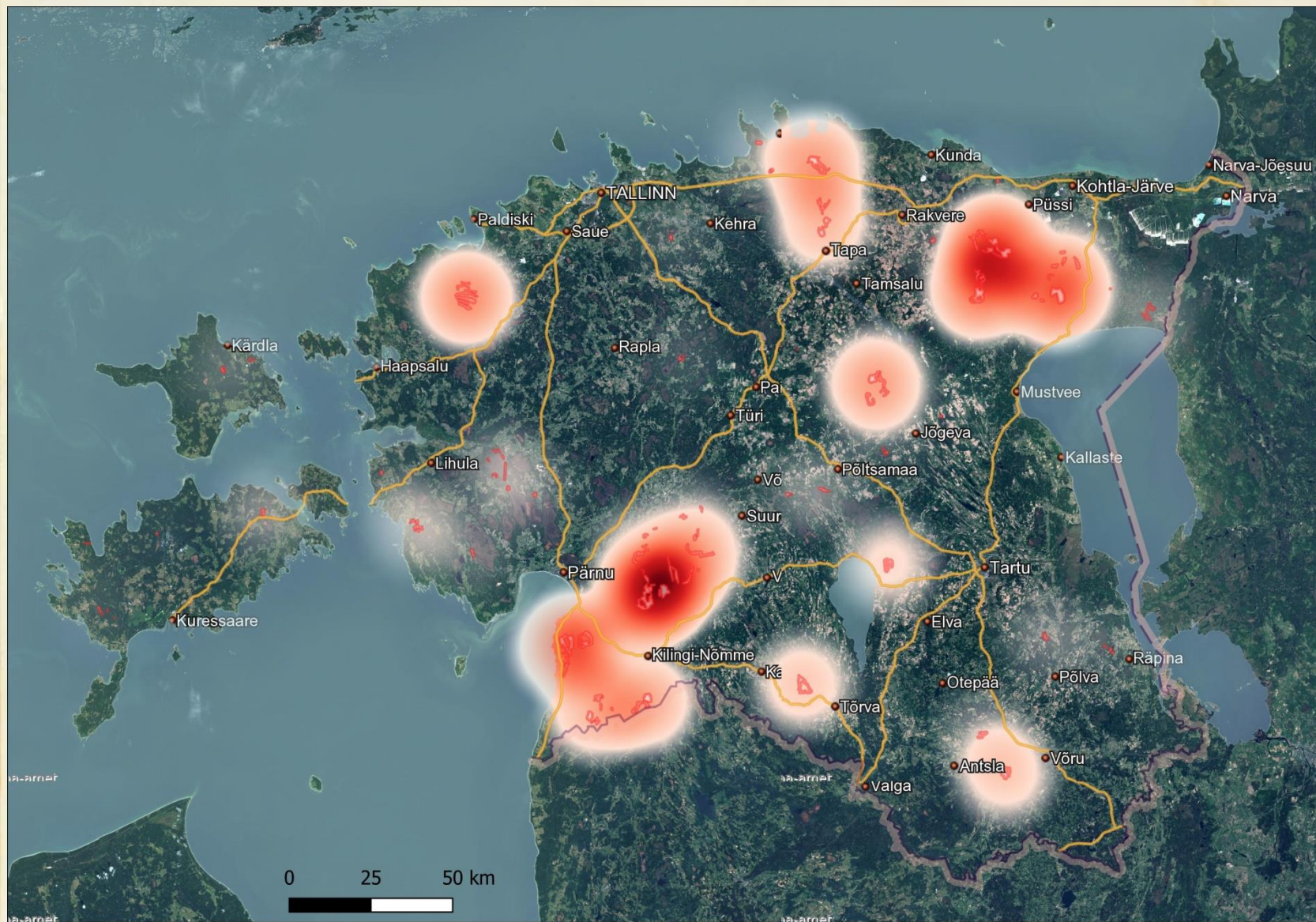


ERINEVUS RAIE% VS LIDAR (2014 VS 2017)



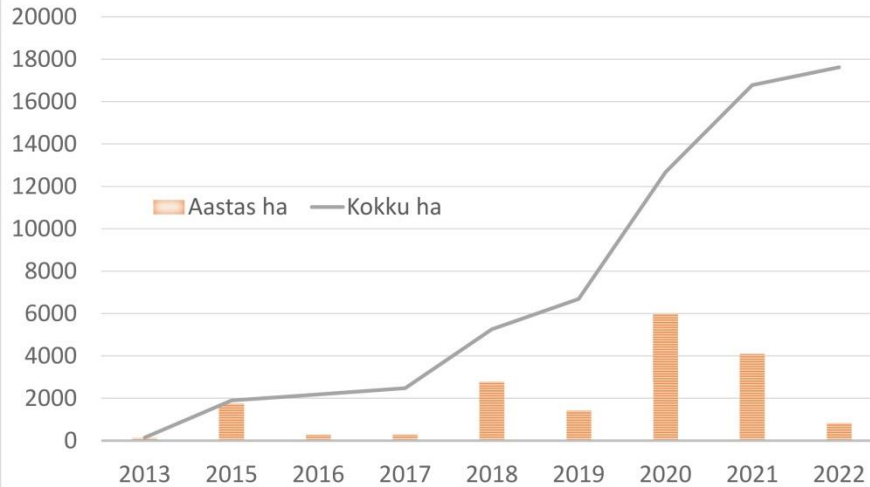


Eesti soode taastamine



Eesti soode taastamine

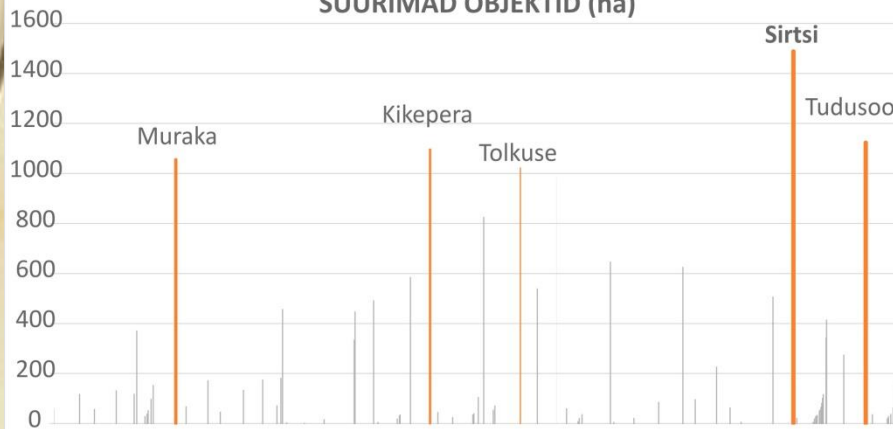
EESTIS TAASTATUD SOID RMK ANDMETEL



RAHASTATUD UUED ALAD - 2028.

RMK ÜF	14 100 ha	3
LIFE Revives	1 700 ha	2
LIFE AdaptEST	3 400 ha	5
LIFE F & F	3 000 ha	5
Rail Baltica komp	4 400 ha	0
Militaar komp	2 000 ha	0
Succow	600 ha	0
H2020 Waterlands	3 300 ha	

SUURIMAD OBJEKTID (ha)



Hetkel ca 20 000 ha
 Aastaks 2028 ca 50 000 ha **~8%**

Uued: Süsinikusidumine, Komp, KOV-i huvi!

Võimalus: Taastuenergeetika, veemajandus

Vajalik: Muu maakasutusega kombineerimine



Suur tänu kuulamast!